

SHARE OF FREEHOLD



Maisonette

# THE FAIRWAY, LONDON

Offers In Excess Of

# £360,000

## FEATURES

- 2-double bedroom ground floor • Share of Freehold maisonette
- Potential to extend (subject to • 2 Double Bedrooms planning)
- Large private garden



**SPACE**  
RESIDENTIAL

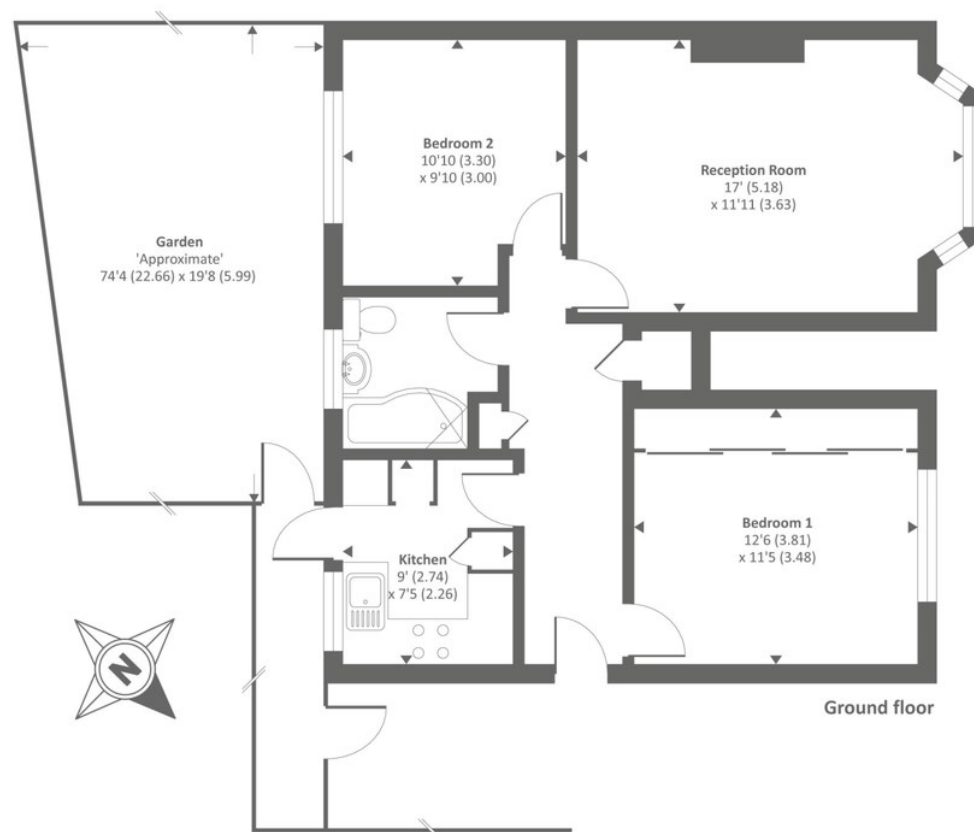
# 2 Bedroom Maisonette located in Mill Hill

Space Residential are pleased to present this wonderful ground floor 2 bedroom maisonette with Share of Freehold.

This Property on The Fairway consists of a lounge area, a modern Kitchen, 2 Double Bedrooms and a bathroom.

The property has a large garden with potential to extend at the rear subject to planning.

Call Space Residential on 0208 906 2222 to arrange a viewing!



Approx. Gross internal floor area 656 SQFT / 60.9 SQM

Copyright nichecom.co.uk 2016 Produced for Anscombe & Ringland REF : 107624

Call us on

**0208 906 2222**

[info@spaceresidential.com](mailto:info@spaceresidential.com)  
[spaceresidential.com](http://spaceresidential.com)

**Council Tax Band**

**C**

Energy Efficiency Rating		
	Current	Potential
Very energy efficient - lower running costs		
(92 plus) <b>A</b>		
(81-91) <b>B</b>		
(69-80) <b>C</b>		72
(55-68) <b>D</b>		
(39-54) <b>E</b>	54	
(21-38) <b>F</b>		
(1-20) <b>G</b>		
Not energy efficient - higher running costs		
England & Wales EU Directive 2002/91/EC		

Agents Note: Whilst every care has been taken to prepare these particulars, they are for guidance purposes only. All measurements are approximate and are for general guidance purposes only and whilst every care has been taken to ensure their accuracy, they should not be relied upon and potential buyers are advised to recheck the measurements.

**SPACE**  
RESIDENTIAL